



We deliver more than we *commit*

Office Num : 033 2674 2627



CROWN PALACE

www.crownrealty.in

2 minutes walk from Konnagar Rail Station

Developed by
**CROWN
REALTY**

SPECIFICATIONS

Structure

Foundation : Isolated/Stripped Footing with RCC framed Structure.
Wall : Construction with 8" and 5" bricks wall
Bricks : No. 1 bricks
Cement : Ultratech Cement or similar brand
Iron : Branded Iron



Kitchen

Flooring : Vitrified Tiles
Wall finishes : Branded Tiles upto 2' above working platform
Others : Granite Counter with stainless steel sink



Steel railing

In Stairs and in Balconies (front side)



Toilet

Wall : Branded Tiles upto roof
Flooring : Vitrified Tiles Finish
WC, Wash Basin : Branded EWC with cistern, Porcelain
Geyser : Geyser provision in all toilets
Fittings : Marc or similar quality CP fittings with hot & cold water mixing arrangement in Shower only



Doors

All Frames : Shaal Frame.
Front Door : Segun front door
Balcony - Sliding Glass Door : Aluminium sliding Window with Glass panel
Other inside doors : Polish finished inside, shutter Flash-door, good quality.
Toilet Door : P.V.C finished - Heavy door (will last double than light door)



Wall Finish

Internal
Living/Dining/Bedrooms : Putty with Primer finish
Lift Lobbies : Putty with Primer finish
External
Weather coated paint over Plaster



Window

Aluminium sliding Window and guarded by M.S. Grill



Lift

OTIS or Similar world class lift.



Flooring

Living/Dining : Vitrified Tiles
Balcony : Vitrified Tiles with Steel railing
Bedrooms : Vitrified Tiles
Lift Lobbies & Stair : Marble/Vitrified Tiles with Steel railing



Air Conditioning

Provision in all Bedrooms



Other Facilities

Cable connection on all bedrooms and telephone connection only on Living room



Water Supply

24hrs with Deep Tube-well (submersible pump)



Electrical

Wire, Switch Board, Switches : Concealed copper wiring with FINOLEX or similar quality wire, Orega (or Similar quality) modular switches with protective M.C.B's and RCCB switch.
30 Nos. point only including two 15 Amp. Plug Point, AC point to all the Bedrooms.

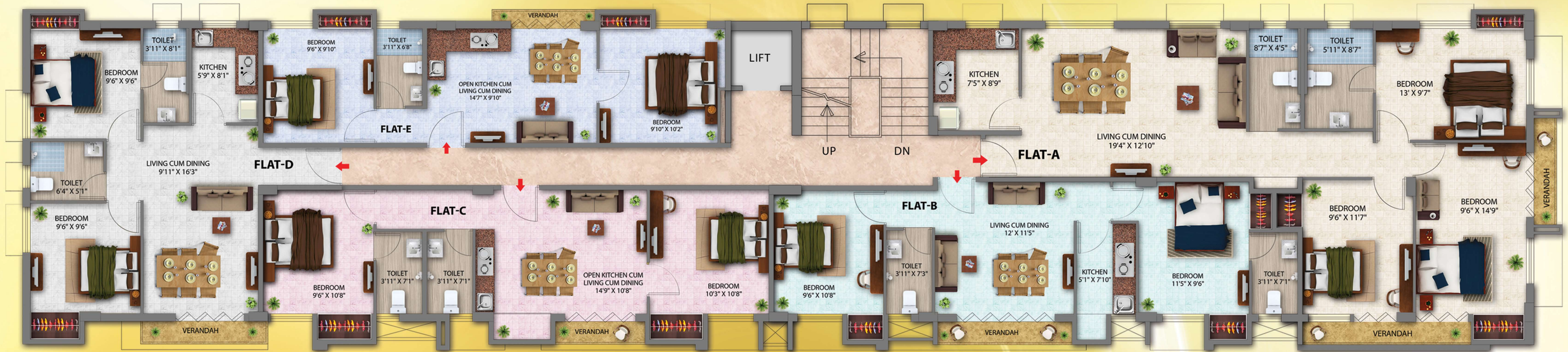


Crown Palace Floor Plans

BLOCK 1 TYPICAL
1ST TO 4TH FLOOR PLAN



FLAT	SBUA	BHK
A	1278 sqft	3
B	767 sqft	2
C	719 sqft	2
D	767 sqft	2
E	601 sqft	2



Crown Palace Floor Plans Individuals

BLOCK 1 TYPICAL
1ST TO 4TH



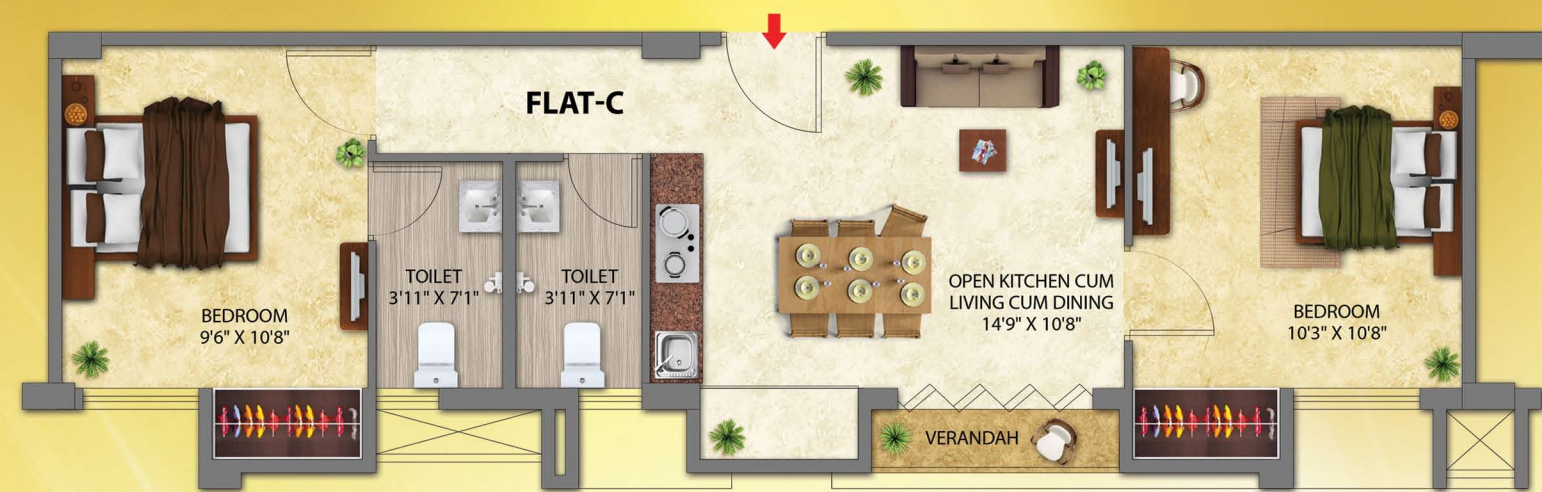
FLAT	SBUA	BHK
A	1278	3



FLAT	SBUA	BHK
B	767	2



FLAT	SBUA	BHK
D	767	2

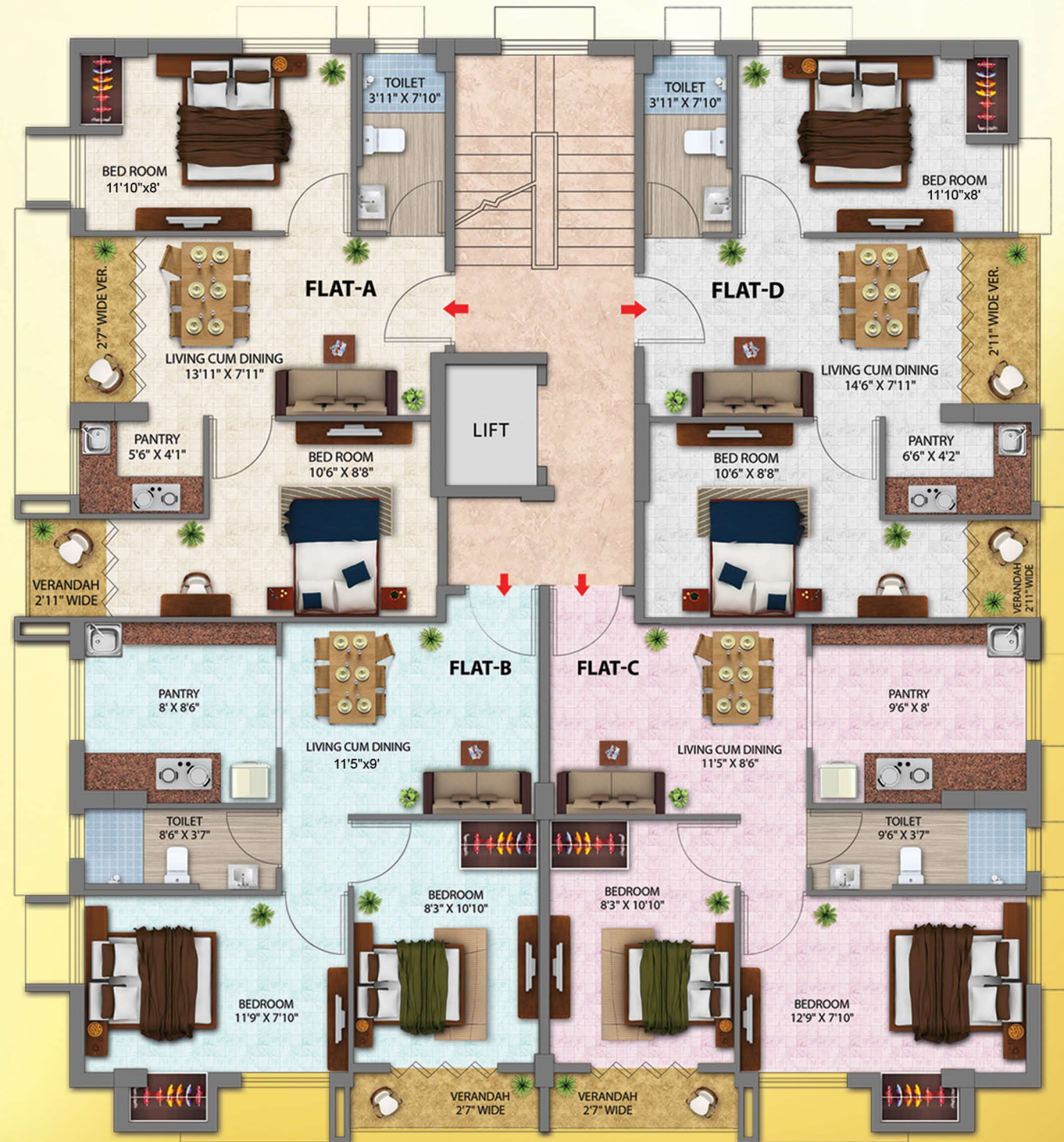


FLAT	SBUA	BHK
C	719	2



FLAT	SBUA	BHK
E	601	2





Crown Palace Floor Plans

N
 BLOCK 2 TYPICAL
 1ST TO 4TH FLOOR PLAN

FLAT	SBUA	BHK
A	601 sqft	2
B	641 sqft	2
C	669 sqft	2
D	623 sqft	2



Location Map



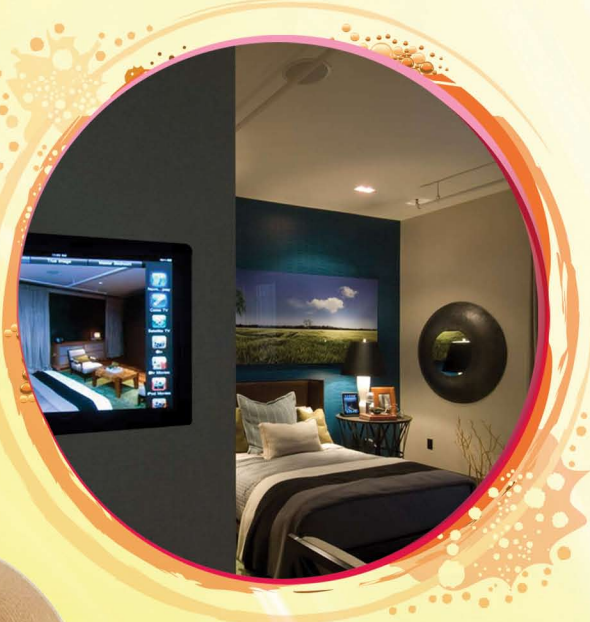
At Crown Palace, you are truly connected to the world. Strategically located at Konnagar, just two minutes walk from the railway station, you have all possible modes of transport, to reach your everyday destinations. The rail route with trains every few minutes to reach Howrah on one side and to Tarakeshwar on the other side, and that too, available till late at night makes you feel truly mobile. Dum Dum and Salt Lake and nearby surroundings, are less than 30 minutes, easily accessible by convenient roads. If you want to enjoy the breezy Ganges in the evenings, then just walk down to GT road and have a great family time or even have a boat ride across the river and get peace and prayer at the Dakhineswar Temple. What more can you ask?

- 15 minutes drive to Belgharia Expressway
- 10 minutes drive to Delhi Road.
- 10 minutes walk to Ganga River.
- 2 minutes walk to Konnagar Rail Station.
- Markets, Schools, Colleges, Hospitals and Banks are in close vicinity.

AMENITIES

Crown Palace with its strategic location next to Konnagar Rail Station, also offers best in class conveniences to give you a peaceful and hassle free life. Apart from the gracious elevation that is a visual treat, you can spend your evenings and enjoy your functions at the AC Community Hall. Lifts from OTIS make for easy and comfortable movement. Be assured of the secured environment with video door phones installed for visitor verification and 24 hours security for mental peace and comfortable daily living. Water being the most essential daily intake for your well being and health, a separate water treatment plant provides clean and purified water.

Video Door Phone



AC Community Hall



Otis Lift



Water Treatment Plant



CCTV Camera



24 hours security



ABOUT DEVELOPERS

Crown Palace is a premium apartment built with superior quality of raw materials and cement. This prime project is developed by Crown Realty who are known to deliver top quality projects in Konnagar like Pronit Apartment and Anuraj Apartment.

Crown Realty has always lived upto the commitment they make to their customers. They provide comfortable, luxurious spaces which are not too hard on the pocket as they believe in keeping their customers happy and contribute towards joyful living.



Builders & Developers

CROWNREALTY

E : crownrealty.in@gmail.com

358 Cripser Road, Konnagar, Hooghly, WB - 712235

W : www.crownrealty.in

Call : 033 2674 2627 / 98360 52595